

blueRoller

Roller coater

From 450 - 1650mm coating width

Compact systems designed for the efficient coating from web and plate material. Suitable for common media (EVA, polyamide, PUR- Hot melt, polyester, APAO-Hot melt, 1K-PUR cold glue, wood glue, starch-based adhesives and waxes). Modular design for lighter access to all components for improved service accessibility and low maintenance. Heated and coated rollers for even adhesive application and easy to clean. Low adhesive level in system. Coating weight adjustable over precision spindles with hand wheels. Separate speed setting for coating and blade roller so individual configuration options can be achieved for specific customer requirements in the industry. Slim design, extremely reliable for long service life by daily usage.



fig. blueRoller650

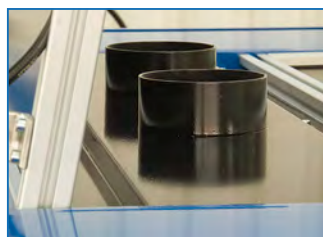
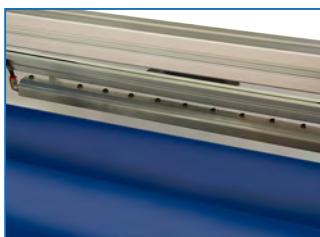




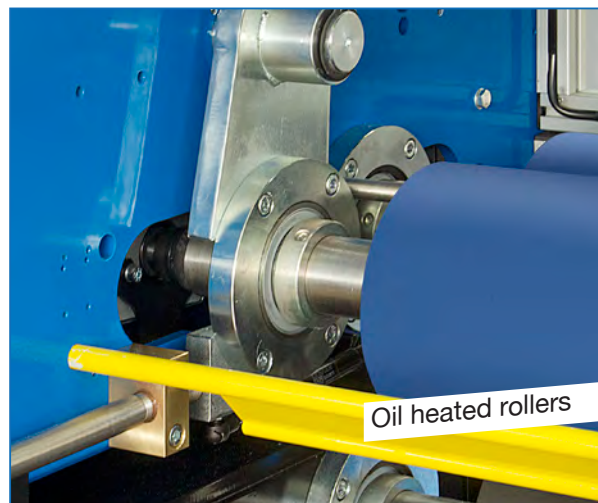
Mechanical and electrical integration into existing production lines

Perfect adaption to customer specific requirements due to multiple options:

- Electrical and mechanical interfaces
- Automatic adhesive replenishment via blueDrum melter or blueTank unit
- Dry air unit for the use with reactive PUR-Adhesive
- Control systems Siemens Simatic S7 or Phoenix Contact



Dry air unit (Air Curtain) with extraction system connection



Oil heated rollers

Technical data	blueRoller 450-1650
Heating capacity	ca. 8kW
Coating weight	50 - 150g/m ²
Coating Speed	1 - 20m/min
Temperature range	50 - 200°C

The values indicated can vary depending on the adhesive and coating parameters. Technical changes reserved. © 2014 blueMelt GmbH